

# AMERICUS



**PLT**  
**2022 CATALOG**



# SPORT HP

**25/365**  
LIMITED  
PROTECTION POLICY

The Americus Sport HP features an aggressive directional tread pattern for spirited driving. The continuous running center rib provides stability in cornering and at highway speeds. The Americus Sport HP is backed by our No Questions Asked, 25/365 Free Replacement Limited Protection Policy and a **60,000 mile** treadwear protection.



Size	LI/SR	Tread Depth	Overall Diameter	Section Width	Max Load @ PSI	UTQG	Stock #
195/50R15	82V	10	22.7	7.91	1050@44	500AA	AMD0173
195/55R15	85V	10	23.4	7.91	1140@44	500AA	AMD0162
205/55R15	88V	10	23.9	8.43	1230@44	500AA	AMD0172
195/55R16	87V	10	24.4	7.91	1200@44	500AA	AMD0176
205/55R16	91V	10	24.9	8.43	1355@44	500AA	AMD0177
215/55R16 XL	97V	10	25.3	8.90	1609@50	500AA	AMD0169
225/55R16 XL	99V	10	25.7	9.17	1710@50	500AA	AMD0167
205/50ZR17 XL	93W	10	25.1	8.43	1435@50	420AA	AMD0187
215/45ZR17	87W	10	24.7	8.39	1200@44	420AA	AMD0188
215/50ZR17	91W	10	25.5	8.90	1355@44	420AA	AMD0179
215/55ZR17	94W	10	26.3	8.90	1480@44	420AA	AMD0178
225/45ZR17 XL	94W	10	25.0	8.86	1480@50	420AA	AMD0181
225/50ZR17	94W	10	25.9	9.17	1480@44	420AA	AMD0180
225/40ZR18 XL	92W	10	25.1	9.06	1390@50	420AA	AMD0183
225/45ZR18 XL	95W	10	25.9	8.86	1520@50	420AA	AMD0182



# RECON SPORT

**25365**  
LIMITED  
PROTECTION POLICY



The Amerigus Recon Sport is an ultra-high performance tire designed for exceptional handling in all weather conditions. The Recon Sport's asymmetrical tread design and enhanced hydroplaning resistance technology provides superior performance for a quiet, comfortable and dynamic ride. The Recon Sport is backed by our No Questions Asked, 25/365 Limited Protection Policy and a **45,000-mile** treadwear protection.

Size	LI/SR	Tread Depth	Overall Diameter	Section Width	Max Load @ PSI	UTQG	Stock #
205/55ZR16 XL	94W	10	24.9	8.4	1477@50	500AA	AMD1200
215/55ZR16 XL	97W	10	25.3	8.9	1609@50	500AA	AMD1225
205/50ZR17 XL	93W	10	25.1	8.4	1433@50	500AA	AMD1205
215/45ZR17 XL	91W	10	24.7	8.4	1356@50	500AA	AMD1210
215/55ZR17 XL	98W	10	26.3	8.9	1653@50	500AA	AMD1235
225/45ZR17 XL	94W	10	25.0	8.9	1477@50	500AA	AMD1240
225/50ZR17 XL	98W	10	25.9	9.2	1653@50	500AA	AMD1245
235/50ZR17 XL	100W	10	26.3	9.7	1764@50	500AA	AMD1280
225/40ZR18 XL	92W	10	25.1	9.1	1764@50	500AA	AMD1260
225/45ZR18 XL	95W	10	25.9	8.9	1521@50	500AA	AMD1255
235/45ZR18 XL	98W	10	26.3	9.3	1653@50	500AA	AMD1285
245/40ZR18 XL	97W	10	25.7	9.8	1609@50	500AA	AMD1305
245/45ZR18 XL	100W	10	26.7	9.6	1764@50	500AA	AMD1295
225/35ZR20 XL	90W	10	26.2	9.1	1323@50	500AA	AMD1275
245/35ZR20 XL	95W	10	26.8	9.8	1521@50	500AA	AMD1315
245/45ZR20 XL	103W	10	28.7	9.6	1929@50	500AA	AMD1310
275/35ZR20 XL	102W	10	27.6	10.9	1874@50	500AA	AMD1360



# RECON CUV



The Americus Recon CUV features an all-season silica-based compound which improves wet and dry traction and provides long wearing durability. Proven tread design ensures quick and efficient water evacuation and traction in all conditions. The Recon CUV is backed by our No Questions Asked, 25/365 Free Replacement Limited Protection Policy and a **60,000 mile** treadwear protection.

Size	LI/SR	Tread Depth	Overall Diameter	Section Width	Max Load @ PSI	UTQG	Stock #
225/75R15	102T	11	28.31	8.78	1875@44	560AA	AMD0305
235/75R15	109T	11	28.86	9.25	2270@50	560AA	AMD0471
205/70R15	96H	10	26.34	8.23	1565@44	560AA	AMD0318
215/70R15	98H	10	26.89	8.70	1655@44	560AA	AMD0320
225/70R15	100H	11	27.44	8.98	1765@44	560AA	AMD0322
225/75R16	108T	11	29.29	8.78	2205@50	560AA	AMD0306
245/75R16	111T	11	30.47	9.76	2405@44	560AA	AMD0307
265/75R16	116T	11	31.65	10.51	2755@44	560AA	AMD0310
215/70R16	100H	11	27.87	8.70	1765@44	560AA	AMD0324
225/70R16	103H	11	28.43	8.98	1930@44	560AA	AMD0326
235/70R16	106H	11	28.98	9.45	2095@44	560AA	AMD0328
245/70R16	111H	11	29.53	9.76	2405@50	560AA	AMD0330
255/70R16	111H	11	30.08	10.24	2405@44	560AA	AMD0331
265/70R16	112H	11	30.63	10.71	2470@44	560AA	AMD0370
215/65R16	102H	11	27.01	8.70	1875@50	560AA	AMD0377
235/70R17	111H	11	30.00	9.45	2405@50	560AA	AMD0376
245/70R17	110H	11	30.55	9.76	2335@44	560AA	AMD0378
265/70R17	115H	11	31.65	10.71	2680@44	560AA	AMD0379
225/65R17	102H	11	28.50	8.98	1875@44	560AA	AMD0380
235/65R17	108H	11	29.06	9.45	2205@50	560AA	AMD0382
245/65R17	111H	11	29.53	9.76	2405@50	560AA	AMD0384
265/65R17	112H	11	30.55	10.71	2470@44	560AA	AMD0372
235/60R17	102H	11	28.11	9.45	1875@44	560AA	AMD0385
225/60R17	99H	11	27.64	8.98	1710@44	560AA	AMD0387
255/70R18	113H	11	32.09	10.24	2535@44	560AA	AMD0371
255/65R18	111H	11	31.06	10.24	2405@44	560AA	AMD0391
275/65R18	116H	11	32.09	10.98	2755@44	560AA	AMD0389
225/60R18	100H	11	28.62	8.98	1765@44	560AA	AMD0393
235/60R18	107V	11	29.09	9.45	2150@50	560AA	AMD0395
245/60R18	105V	11	29.57	9.76	2040@44	560AA	AMD0397
265/60R18	110H	11	30.51	10.71	2335@44	560AA	AMD0390
235/55R18	104V	11	28.15	9.65	1985@50	560AA	AMD0392
255/55R18	109V	11	29.02	10.43	2270@50	560AA	AMD0394
275/60R20	115H	11	32.99	10.98	2680@44	560AA	AMD0400
275/55R20	117V	11	31.26	11.69	2835@50	560AA	AMD0657
265/50R20	107V	11	30.47	10.91	2150@44	560AA	AMD0396
285/50R20	112V	11	31.26	11.69	2470@44	560AA	AMD0658



# TOURING PLUS



The AmeriCus Touring Plus is a premium touring performance radial built for the American road. Engineered for small and midsize vehicles, the Touring Plus is a quiet running, long wearing, good handling tire. The Touring Plus is backed by our No Questions Asked, 25/365 Free Replacement Limited Protection Policy and a **60,000 mile** treadwear protection.

Size	LI/SR	Tread Depth	Overall Diameter	Section Width	Max Load @ PSI	UTQG	Stock #
155/80R12	77T	10	21.8	6.18	910@44	500AA	AMD0010
175/65R14	82H	10	23.0	6.97	1047@44	500AA	AMD0031
175/70R14	84H	10	23.7	6.97	1102@44	500AA	AMD0025
185/60R14	82H	10	22.8	7.44	1047@44	500AA	AMD0037
185/65R14	86H	10	23.5	7.44	1168@44	500AA	AMD0042
185/70R14	88H	10	24.3	7.44	1234@44	500AA	AMD0022
195/70R14	91H	10	24.8	7.91	1356@44	500AA	AMD0049
165/80R15	87T	10	25.4	6.50	1200@44	500AA	AMD0440
185/60R15	84H	10	23.7	7.44	1100@44	500AA	AMD0046
185/65R15	88H	10	24.4	7.44	1234@44	500AA	AMD0055
195/60R15	88V	10	24.2	7.91	1234@44	500AA	AMD0050
195/65R15	91H	10	25.0	7.91	1355@44	500AA	AMD0044
205/60R15	91H	10	24.7	8.23	1355@44	500AA	AMD0047
205/65R15	94H	10	25.5	8.23	1480@44	500AA	AMD0045
215/60R15	94H	10	25.2	8.70	1480@44	500AA	AMD0048
215/65R15	96H	10	26.0	8.70	1565@44	500AA	AMD0057
205/60R16	92H	10	25.7	8.23	1390@44	500AA	AMD0056
205/65R16	95H	10	26.5	8.23	1520@44	500AA	AMD0052
215/60R16	95H	10	26.1	8.70	1520@44	500AA	AMD0076
215/65R16 XL	102H	10	27.0	8.70	1875@50	500AA	AMD0053
225/60R16	98H	10	26.6	8.98	1655@44	500AA	AMD0078
235/60R16	100H	10	27.1	9.45	1765@44	500AA	AMD0079
215/65R17	99T	10	28.0	8.70	1710@44	500AA	AMD0082

[americustire.com](http://americustire.com)

# RECON H/T



The Recon H/T is a commercial grade light truck tire with multi-ply casing construction to handle heavy workloads. Large circumferential grooves evacuate water for improved traction in the rain. Optimized zigzag siping provides excellent traction and braking performance in wet and light snow conditions. A solid shoulder design provides superior resistance to irregular wear and added stability for higher loads and trailering. The Recon H/T is backed by our No Questions Asked, 25/365 Free Replacement Limited Protection Policy.

Size	LI/SR	LR/PR	Tread Depth	Overall Diameter	Section Width	Max Load @ PSI	Stock #
LT215/85R16	115/112Q	E/10	14	30.4	8.5	2680/2470@80	AMD2100
LT225/75R16	115/112Q	E/10	14	29.3	8.8	2680/2470@80	AMD2120
LT235/80R17	120/117Q	E/10	14	31.8	9.3	3085/2835@80	AMD2105
LT235/85R16	120/116Q	E/10	14	31.7	9.3	3042/2778@80	AMD2110
LT245/70R17	119/116Q	E/10	14	30.6	9.8	3000/2755@80	AMD2142
LT245/75R16	120/116Q	E/10	14	30.5	9.8	3000/2778@80	AMD2130
LT245/75R17	121/118Q	E/10	14	31.5	9.8	3195/2910@80	AMD2141
LT265/70R17	121/118Q	E/10	14	31.7	10.7	3195/2910@80	AMD2144
LT265/75R16	123/120Q	E/10	14	31.7	10.5	3415/3085@80	AMD2140

# COMMERCIAL LT



The Americus Commercial LT is a commercial grade light truck tire with multi-ply casing construction to handle heavy workloads. Double steel belted plies provide puncture resistance and durability. The Commercial LT is backed by our No Questions Asked, 25/365 Free Replacement Limited Protection Policy.

Size	LI/SR	LR/PR	Tread Depth	Overall Diameter	Section Width	Max Load @ PSI	Stock #
LT235/75R15	116/113Q	E/10	15	28.9	9.25	2755/2535@80	AMD2005
LT215/85R16	115/112Q	E/10	14	30.4	8.5	2680/2470@80	AMD2000
LT225/75R16	115/112Q	E/10	14	29.3	8.78	2680/2470@80	AMD2020
LT235/85R16	120/116Q	E/10	14	31.7	9.25	3042/2778@80	AMD2010
LT245/75R16	120/116Q	E/10	14	30.5	9.76	3042/2778@80	AMD2030
LT265/75R16	123/120Q	E/10	15	31.7	10.51	3415/3085@80	AMD2040
LT245/70R17	119/116Q	E/10	15	30.6	9.76	3000/2755@80	AMD2042
LT245/75R17	121/118Q	E/10	15	31.5	9.76	3195/2910@80	AMD2041
LT265/70R17	121/118Q	E/10	15	31.7	10.71	3195/2910@80	AMD2044
LT275/70R18	125/122Q	E/10	15	33.2	10.98	3640/3305@80	AMD2046



# RUGGED ALL-TERRAIN



The Amerigus Rugged All-Terrain is an aggressive on and off-road SUV and Light Truck radial built for American adventures. The unique connected-center-rib design offers a stable footprint on and off-road. Variable circumferential grooves and shoulder design reduces highway noise and hydroplaning. The Rugged All-Terrain is backed by our No Questions Asked, 25/365 Free Replacement Limited Protection Policy and a **55,000 mile** treadwear protection.

Size	LI/SR	LR/PR	Tread Depth	Overall Diameter	Section Width	Max Load @ PSI	UTQG	Stock #
235/75R15	105T	-	12	28.9	9.3	2040@44	540AB	AMD0610
245/75R16	111T	-	12	30.5	9.8	2405@44	540AB	AMD0611
265/75R16	116T	-	12	31.7	10.5	2755@44	540AB	AMD0612
235/70R16	106T	-	12	29.0	9.5	2095@44	540AB	AMD0615
245/70R16	111T	XL	12	29.5	9.8	2405@50	540AB	AMD0620
255/70R16	111T	-	12	30.1	10.2	2405@44	540AB	AMD0625
265/70R16	112T	-	12	30.6	10.7	2470@44	540AB	AMD0630
245/70R17	110T	-	12	30.6	9.8	2335@44	540AB	AMD0631
265/70R17	115T	-	12	31.7	10.7	2680@44	540AB	AMD0635
285/70R17	117T	-	12	32.8	11.5	2835@44	540AB	AMD0633
245/65R17	107T	-	12	29.5	9.8	2150@44	540AB	AMD0640
265/65R17	112T	-	12	30.6	10.7	2470@44	540AB	AMD0645
265/70R18	116T	-	12	32.6	10.7	2755@44	540AB	AMD0517
275/65R18	116T	-	12	32.1	11.0	2755@44	540AB	AMD0518
265/60R18	110T	-	12	30.5	10.7	2335@44	540AB	AMD0522
275/60R20	115T	-	12	33.0	11.0	2680@44	540AB	AMD0519
275/55R20	117T	XL	12	31.9	11.2	2835@50	540AB	AMD0521
285/55R20	115T	-	12	32.4	11.7	2680@44	540AB	AMD0523
265/50R20	107T	-	12	30.5	10.9	2150@44	540AB	AMD0525
LT235/75R15	104/101S	C/6	14	28.9	9.3	1985/1820@50	-	AMD0423
LT215/85R16	115/112S	E/10	14	30.4	8.5	2680/2470@80	-	AMD0428
LT235/85R16	120/116S	E/10	15	31.7	9.3	3085/2755@80	-	AMD0429
LT225/75R16	115/112S	E/10	14	29.3	8.8	2680/2470@80	-	AMD0431
LT245/75R16	120/116S	E/10	15	30.5	9.8	3085/2755@80	-	AMD0432
LT265/75R16	123/120S	E/10	15	31.7	10.5	3415/3085@80	-	AMD0433
LT285/75R16	126/123S	E/10	15	32.8	11.5	3750/3415@80	-	AMD0436
LT265/70R17	121/118S	E/10	15	31.7	10.7	3195/2910@80	-	AMD0434
LT235/80R17	120/117S	E/10	15	31.8	9.3	3085/2835@80	-	AMD0650
LT245/75R17	121/118S	E/10	15	31.5	9.8	3195/2910@80	-	AMD0655
LT285/70R17	121/118S	E/10	15	32.8	11.5	3195/2910@80	-	AMD0437
30x9.50R15LT	104S	C/6	15	29.5	9.5	1985@50	-	AMD0430
31x10.50R15LT	109S	C/6	15	30.5	10.5	2270@50	-	AMD0450
35x12.50R17LT	121S	E/10	17	34.5	12.5	3195@65	-	AMD0451

# RUGGED A/T<sup>R</sup>



The Americus Rugged A/T<sup>R</sup> is our next generation of aggressive all-terrain tires designed to kick-start your adventure. With advanced 3D siping technology and rigid interior blocks, the Rugged A/T<sup>R</sup> provides exceptional handling on wet and dry surfaces, while the studdable shoulder lugs and an all new 3PMSF rated tread compound means it handles mud, snow and ice with ease. Carrying an improved **50,000-mile** limited treadwear protection and backed by our No Questions Asked, 25/365 Free Replacement Limited Protection Policy on all sizes, the Rugged A/T<sup>R</sup> is the ultimate all-terrain tire.

Size	LI/SR	LR/PR	Tread Depth	Overall Diameter	Section Width	TSMI#	Max Load @ PSI	UTQG	Stock #
235/75R15	109T	XL	13	28.9	9.3	12	2271@50	500AB	AMD1701
235/70R16	109T	XL	13	29.0	9.5	12	2271@50	500AB	AMD1707
245/75R16	111T	-	13	30.5	9.8	12	2403@44	500AB	AMD1703
255/70R16	111T	-	13	30.1	10.2	12	2403@44	500AB	AMD1709
265/70R16	112T	-	13	30.6	10.7	12	2469@44	500AB	AMD1711
265/75R16	116T	-	13	31.7	10.5	12	2756@44	500AB	AMD1705
245/65R17	111T	XL	13	29.5	9.8	12	2403@50	500AB	AMD1717
245/70R17	110T	-	13	30.6	9.8	12	2337@44	500AB	AMD1713
265/70R17	115T	-	13	31.7	10.7	12	2679@44	500AB	AMD1715
265/60R18	114T	XL	13	30.5	10.7	12	2601@50	500AB	AMD1719
265/70R18	116T	-	13	32.6	10.7	12	2756@44	500AB	AMD1101
275/65R18	116T	XL	13	32.1	11.0	12	2756@50	500AB	AMD1106
265/50R20	111T	XL	13	30.5	10.9	12	2405@50	500AB	AMD1102
275/55R20	117T	XL	13	31.9	11.2	12	2833@50	500AB	AMD1721
275/60R20	116T	XL	13	33.0	11.0	12	2756@50	500AB	AMD1107
LT235/75R15	116/113S	E/10	16	28.9	9.3	15	2756/2535@80	-	AMD1723
LT215/85R16	115/112S	E/10	16	30.4	8.5	15	2680/2470@80	-	AMD1725
LT225/75R16	115/112S	E/10	16	29.3	8.8	15	2680/2470@80	-	AMD1729

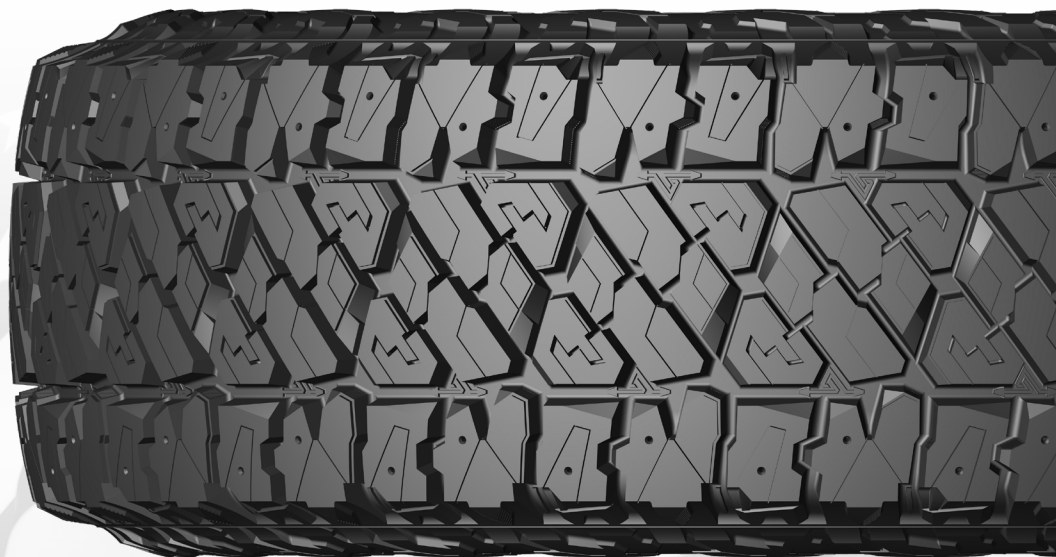


# RUGGED A/T<sup>R</sup>



The Americus Rugged A/T<sup>R</sup> is our next generation of aggressive all-terrain tires designed to kick-start your adventure. With advanced 3D siping technology and rigid interior blocks, the Rugged A/T<sup>R</sup> provides exceptional handling on wet and dry surfaces, while the studdable shoulder lugs and an all new 3PMSF rated tread compound means it handles mud, snow and ice with ease. Carrying an improved **50,000-mile** limited treadwear protection and backed by our No Questions Asked, 25/365 Free Replacement Limited Protection Policy on all sizes, the Rugged A/T<sup>R</sup> is the ultimate all-terrain tire.

Size	LI/SR	LR/PR	Tread Depth	Overall Diameter	Section Width	TSMI#	Max Load @ PSI	UTQG	Stock #
LT235/85R16	120/116S	E/10	16	31.7	9.3	15	3042/2778@80	-	AMD1727
LT245/75R16	120/116S	E/10	16	30.5	9.8	15	3042/2778@80	-	AMD1731
LT265/75R16	123/120S	E/10	16	31.7	10.5	15	3415/3085@80	-	AMD1733
LT285/75R16	126/123S	E/10	16	32.8	11.3	15	3748/3417@80	-	AMD1735
LT235/80R17	120/117S	E/10	16	31.8	9.3	15	3085/2835@80	-	AMD1016
LT245/70R17	119/116S	E/10	16	30.6	9.8	15	3000/2756@80	-	AMD1739
LT245/75R17	121/118S	E/10	16	31.5	9.8	15	3197/2910@80	-	AMD1737
LT265/70R17	121/118S	E/10	16	31.7	10.7	15	3197/2910@80	-	AMD1741
LT285/70R17	121/118S	E/10	16	32.8	11.5	15	3197/2910@80	-	AMD1743
LT265/70R18	124/121S	E/10	16	32.6	10.7	15	3525/3195@80	-	AMD1104
LT275/65R18	123/120S	E/10	16	32.1	11.0	15	3415@3085@80	-	AMD1076
LT275/70R18	125/122S	E/10	16	33.2	11.0	15	3640/3305@80	-	AMD1078
LT285/65R18	125/122S	E/10	16	32.6	11.5	15	3640/3305@80	-	AMD1013
LT265/60R20	121/118S	E/10	16	32.5	10.7	15	3195/2910@80	-	AMD1074
LT275/65R20	126/123S	E/10	16	34.1	11.0	15	3750/3415@80	-	AMD1077
LT285/55R20	122/119S	E/10	16	32.4	11.7	15	3305/3000@80	-	AMD1108
31x10.50R15LT	109S	C/6	16	30.5	10.6	15	2270@50	-	AMD1745
33x12.50R20LT	114S	E/10	16	32.5	12.5	15	2600@65	-	AMD1747
35x12.50R20LT	121S	E/10	16	34.5	12.5	15	3195@65	-	AMD1749



# RUGGED M/T



The Americus Rugged M/T is a premium high-void mud pattern with large shoulder blocks for deep traction and crisp handling in on and off-road conditions. The self-cleaning tread has "thunder-bolt" stone ejectors. The joint-less spiral nylon over-wraps provide extra toughness and 3-ply body plies (in larger sizes) helps protect against sidewall impact. The Rugged M/T is backed by our No Questions Asked, 25/365 Free Replacement Limited Protection Policy.

Size	LI/SR	LR/PR	Tread Depth	Overall Diameter	Section Width	Max Load @ PSI	Stock #
LT235/75R15	104/101Q	C/6	19	29.1	9.25	1985/1820@50	AMD2467
LT315/75R16	121/118Q	D/8	20	34.8	12.32	3195/2910@50	AMD2484
LT235/85R16	120/116Q	E/10	19	32.0	9.25	3085/2755@80	AMD2453
LT245/75R16	120/116Q	E/10	19	30.7	9.76	3085/2755@80	AMD2455
LT265/75R16	123/120Q	E/10	19	31.9	10.51	3415/3085@80	AMD2457
LT285/75R16	126/123Q	E/10	19	33.1	11.26	3750/3415@80	AMD2459
LT235/80R17	120/117Q	E/10	20	32.1	9.25	3085/2835@80	AMD2486
LT245/75R17	121/118Q	E/10	19	31.7	9.76	3195/2910@80	AMD2471
LT265/70R17	121/118Q	E/10	19	31.9	10.71	3195/2910@80	AMD2461
LT285/70R17	121/118Q	E/10	19	33.0	11.50	3195/2910@80	AMD2473
LT295/70R17	121/118Q	E/10	21	33.5	11.77	3195/2910@80	AMD2454
LT315/70R17	121/118Q	D/8	20	34.7	12.72	3195/2910@50	AMD2488
LT275/65R18	123/120Q	E/10	20	32.3	10.98	3415/3085@80	AMD2492
LT275/70R18	125/122Q	E/10	19	33.4	10.98	3640/3305@80	AMD2472
LT305/70R18	126/123Q	E/10	20	35.1	12.24	3750/3415@65	AMD2490
LT305/55R20	121/118Q	E/10	20	33.5	12.44	3195/2910@65	AMD2494
32X11.50R15LT	113Q	C/6	21	31.8	11.42	2535@50	AMD2496
30x9.50R15LT	104Q	C/6	19	29.8	9.45	1985@50	AMD2475
31x10.50R15LT	109Q	C/6	19	30.8	10.55	2270@50	AMD2463
33x12.50R15LT	108Q	C/6	21	32.8	12.52	2205@35	AMD2465
33X12.50R17LT	114Q	8	21	32.8	12.50	2600@50	AMD2300
37X12.50R17LT	124P	8	21	36.8	12.50	3525@50	AMD2302
35x12.50R17LT	121Q	D/8	21	34.8	12.52	3195@65	AMD2466
33X12.50 R18LT	122Q	D/8	21	32.8	12.52	3305@80	AMD2500
35X12.50 R18LT	128Q	E/10	21	34.8	12.52	3970@80	AMD2501
33X12.50 R20LT	119Q	F/12	19	32.8	12.52	3000@80	AMD2502
35X12.50 R20LT	125Q	F/12	21	34.8	12.52	3640@80	AMD2503
37X12.50 R20LT	128Q	F/12	21	36.8	12.52	3970@80	AMD2504
33X12.50 R22LT	114Q	F/12	21	32.8	12.52	2600@80	AMD2505
35X12.50 R22LT	121Q	F/12	21	34.8	12.52	3195@80	AMD2506
37X13.50 R22LT	128Q	F/12	21	36.8	13.58	3970@80	AMD2507



# ST RADIAL



The Americus ST Radial features a micro-positioned fiber reinforced belt package for extra strength and durability. The unique tread design features enhanced hydroplaning protection and stability. The sidewall is formulated for extra ozone protection and the tread compounded for low rolling resistance and improved heat dissipation. The ST Radial is backed by our No Questions Asked, 25/365 Free Replacement Limited Protection Policy.

Size	LI/SR	LR/PR	Tread Depth	Overall Diameter	Section Width	Max Load @ PSI	Stock #
ST175/80R13	91/87L	C/6	9	24.0	6.97	1360/1200@50	AMD0500
ST205/75R14	100/96L	C/6	9	26.1	7.99	1760/1570@50	AMD0501
ST215/75R14	102/98L	C/6	9	26.7	8.50	1870/1650@50	AMD0502
ST205/75R15	101/97L	C/6	9	27.1	7.99	1820/1610@50	AMD0503
ST205/75R15	107/102L	D/8	9	27.1	7.99	2150/1870@65	AMD0504
ST225/75R15	113/108L	D/8	9	28.3	8.78	2540/2200@65	AMD0505
ST225/75R15	117/112L	E/10	9	28.3	8.78	2830/2470@80	AMD0506
ST235/80R16	124/120L	E/10	9	30.8	9.25	3520/3080@80	AMD0507



## AMERICUS TIRES LIMITED PROTECTION POLICY

Thank you for your interest in Americus brand tires for your vehicle. We are proud of the quality and performance of the wide range of Americus products and we understand that your continued satisfaction is essential to our success.

### ELIGIBILITY

This Limited Protection Policy applies to Americus brand passenger, light truck and specialty trailer tires purchased on or after January 1, 2020, or, in the absence of proof of purchase, tires with a manufacturing DOT code reading DOT 0120 or later. Eligible tires are covered by this Limited Protection Policy for up to 60 months from the date of purchase or tire manufacturer date. This Limited Protection Policy applies to the original owner of new Americus branded passenger, light truck and specialty trailer tires that are operated in normal service and used on the same vehicle on which they were originally installed according to the vehicle manufacturer's recommendations. Only Americus tires purchased and operated in the United States and Canada are covered by this Limited Protection Policy. For Americus branded product purchased thru an online retailer, a tire claim must go back to the original selling Americus dealer. The online retailer where the Americus branded product was purchased would need to facilitate the claim with that authorized Americus dealer on the consumer's behalf.

### WHAT IS COVERED BY OUR EXCLUSIVE NO QUESTIONS ASKED, 25/365 FREE REPLACEMENT LIMITED PROTECTION POLICY?

The Americus No Questions Asked, 25/365 Free Replacement Limited Protection Policy will fully cover (100% credit) all eligible Americus brand passenger, light truck and specialty trailer tires should one become unserviceable due to defective workmanship, materials, road hazard or a condition other than those listed below during the first 25% of usable treadwear or one year from date of purchase, whichever occurs first.

Tires not eligible for the No Questions Asked, 25/365 Free Replacement Limited Protection Policy that are removed from service due to a covered condition will be replaced with a comparable new Americus brand tire on a prorated basis for a period up to 60 months from the date of purchase or tire manufacturer date, or when the treadwear indicators become visible (worn to 2/32"), whichever occurs first.

### WHAT IS A COMPARABLE TIRE?

A comparable tire may be either the same line and pattern of tire or, in the event that the tire is not available, a tire of the same construction and quality with a different sidewall or tread configuration. If a higher priced tire is accepted as replacement, the difference in price will be at an additional charge to the owner. Any Americus brand replacement tire provided pursuant to this Limited Protection Policy will be covered by the Americus Limited Protection Policy in effect at the time of replacement.

### MILEAGE COVERAGE PLAN

If an eligible tire wears down to the treadwear indicator bars (2/32") and the tire has not delivered the miles specified below, Americus will provide a prorated adjustment based on actual mileage delivered. The cost of mounting, balancing and any other service charges including applicable taxes are excluded from reimbursement.

Pattern	Coverage Plan (Miles/Km)	25/365	Workmanship & Materials (Mo.)
Recon Sport	45,000/75,000	Yes	60
Sport HP	60,000/100,000	Yes	60
Touring Plus	60,000/100,000	Yes	60
Recon CUV	60,000/100,000	Yes	60
Rugged All Terrain	55,000/85,000	Yes	60
Rugged A/TR <sup>®</sup>	50,000/80,000	Yes	60
Rugged M/T	N/A	Yes	60
Commercial LT	N/A	Yes	60
Recon HT	N/A	Yes	60
ST Radial	N/A	Yes	36

The Mileage Coverage Plan applies only to the original purchaser and the tires have been used only on the vehicle on which they were originally installed according to the vehicle manufacturer's recommendations. The Mileage Coverage Plan does not apply to tires used in commercial applications. Tires that have not been rotated at least every 6,000 miles as evidenced by a completed rotation schedule are excluded. Likewise, tires in service for more than 60 months regardless of mileage attained are excluded.

### WHAT IS NOT COVERED BY THIS LIMITED PROTECTION POLICY?

- Improper operation or maintenance. This includes, but is not limited to, effects caused by improper tire inflation and/or improper load/speed practices and/or improper or insufficient tire rotation.

- Wear due to improper vehicle alignment including but not limited to, uneven, cupping, irregular, spotty and feathering wear
- Deliberate abuse or vandalism
- Ride or vibration complaint after the first 1/32" of treadwear
- Damage due to snow chain usage, improper mounting/dismounting or automotive accident
- Tires used in commercial applications are not eligible for 25/365 or Mileage coverage where applicable.

### OWNER'S OBLIGATIONS

To make an eligible claim under this Limited Protection Policy, tires must be rotated with the prescribed rotation patterns as recommended by either the vehicle owner's manual or an authorized Americus tire dealer. Owner must present an original tire sales invoice indicating the date of purchase, tire description and odometer mileage. Adjustment tires must be presented to an authorized Americus dealer and those tires replaced become the property of Americus Tires. Installation charges such as mounting, dismounting and balancing, as well as, any applicable taxes and government-mandated charges on the services rendered at the time of adjustment is the owner's responsibility. Adjustment claims must be completed on an approved claim form, supplied by an authorized Americus dealer, and submitted at time of adjustment.

### WHAT ARE YOUR LEGAL RIGHTS?

No Representative or Dealer has authority to make any representation, promise or agreement on behalf of Americus, except as stated herein.

Any tire, no matter how well constructed, may fail in service or otherwise become unserviceable due to conditions beyond the control of the tire manufacturer. Under no circumstances is this Limited Protection Policy a representation that a tire failure cannot occur. This Limited Protection Policy gives you specific legal rights and you may also have other rights that vary from state to state or province to province.

### DISCLAIMER

This Limited Protection Policy is in lieu of, and Americus Tires hereby disclaims, any and all other Limited Protection Policies and representations, express or implied, including without limitation any Protection Policy of merchantability of fitness for a particular purpose, and no other Limited Protection Policy or representation of any kind is made by Americus Tires or shall be implied by law. This Limited Protection Policy is subject to change without notice.

### LIMITATION OF DAMAGES

In no event and under no circumstance shall Americus Tires be liable to the buyer for any indirect, special, incidental, consequential, lost profit, loss of business, loss of goodwill or reputation, punitive or other damage, cost (including for replacement transportation), expense or loss of any kind. Some states and provinces do not allow the exclusion or limitation of incidental or consequential damages, so the above limitation or exclusion may not apply to you.

### AMERICUS TIRE CARE AND MAINTENANCE GUIDE

Proper inflation pressure is essential for optimum tire performance, safety, and fuel economy. Check for proper inflation pressure at least monthly while tires are cool, as tires will warm up from use after several miles so it is best to check before driving. Use a quality handheld accurate air pressure gauge. It is best to occasionally have your Americus tires inspected by a professional tire shop, as it is difficult to tell just by looking at radial tires whether they are under-inflated or over-inflated. Furthermore, when operating a vehicle equipped with radial tires, it is difficult to notice when a tire has gone flat or nearly flat since the handling of the vehicle may not deteriorate significantly. Remember to always maintain inflation pressure at the level recommended by the vehicle manufacturer as shown on the vehicle placard, on the vehicle certification label or in the vehicle owner's manual.

Evidence of air loss or repeated under-inflation always requires expert inspection to determine the source of leakage and tire removal to determine repairability. To avoid injury, NEVER attempt to re-inflate a tire that has been in operation severely under-inflated. Progressive air loss may result from a variety of conditions such as punctures, cuts, curbing, impacts or partial bead unsealing. Some installation or fitment causes for air loss are (1) incomplete bead seating, (2) tearing of the tire bead caused by a machine tool due to insufficient lubrication or improper adjustment, and (3) leaking valve core or rubber valve components. These should be corrected or replaced when problems are detected and/or whenever tires are replaced.

Under-inflation is the leading cause of tire failure and may result in severe cracking, component separation or complete loss of air. Under-inflation reduces tire load carrying capacity, allows for excessive sidewall flexing and increases rolling resistance, resulting in potential heat build-up and mechanical damage. Maintaining proper inflation pressure is the most important thing you can do to help promote tire safety, durability and maximize tread life.

Over-inflation will deteriorate ride quality, reduce braking ability and generate unwanted vibration. Over-inflation also increases the chances of impact damage.

### DON'T OVERLOAD YOUR VEHICLE

The maximum load capacity stamped on the sidewalls of P-metric tires is reduced by ten percent when used on a light truck, utility vehicle or trailer. Never fit P-metric tires to light trucks that specify LT-type replacement tires.

## American Omni Trading Company

1221 Park West Green Dr. | Katy, TX 77493  
Corporate Phone | 281-600-TIRE  
american-omni.com

# AmericusTire.com